

Sensivate

Post-Column Reactor

The Sensivate Post-Column Reactor is designed to boost performance while lowering your operating costs.

- *Fast & Easy Setup*
- *Modular configuration with options for 1 or 2 Pumps and 1 or 2 Reactors, with custom Reactor Sizes available*
- *Disposable Reactor Cartridges*
- *All PEEK Fluid Path*



Sensivate Post-Column Reactor

Sensitive Post-Column Derivatization at an Economical Price

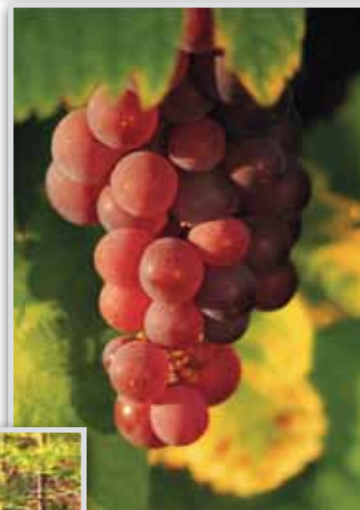
The Scientific Systems Sensivate represents a new level in post-column performance, size and cost. Based on proven pump technology combined with a unique reactor design and disposable heating blocks, you can now achieve post-column derivatization with great performance at an economical price.

Modular Design

The Sensivate's modular design means you can choose your pump system, a reactor block (heated) and a second reactor block (ambient) if necessary. Choose reactor block volumes of 0.15 mL, 0.50 mL, 1.40 mL, or order a custom reactor size (see Ordering Information).

Common Applications

- Carbamates by OPA
- Glyphosates by OPA
- Aflatoxin by iodine
- Amino acids by OPA



All Pumps carry a 3-Year Warranty.



Scientific Systems, Inc.
Designed from Experience. Built for The Future.
www.ssihplc.com

Scientific Systems, Inc.
349 North Science Park Road
State College, PA 16803

Phone: 800-441-4752 • 814-234-7311
Fax: 814-234-2469 • 814-238-6072
Email: sales@ssihplc.com

PSS1014-RevC-120613

Sensivate

Post-Column Reactor

Features:

- Fast & easy setup:
 - One inlet connection (from column)
 - One outlet connection (to detector)
- Modular:
 - 1 or 2 reactors (1 heated)
 - 1 or 2 pumps
- Proven pump technology with self-flush to improve seal life
- Pulse damper for reduced pulsation
- Reduced number of connections minimizes leaks
- All connections accessible from front panel
- Front panel displays each reagent's flow, pressure, set, and actual temperature
- Pump flow and reactor temperature settable from front panel or RS232
- Upper/lower pressure and temperature limits, and system shutdown relay
- Modular cartridge reactor, 2 fluid connections, and one hold-down to change volume or reactor
- Disposable reactor cartridges
- Reactor designed to reduce band broadening—not just a coil
- All PEEK fluid path



*Modular Design
Reactor Module is Available Separately
[see ordering info.]*

Sensivate Environmental Analyses



Pesticides



Aflatoxins



Herbicides

All Pumps carry a 3-Year Warranty.

Sensivate

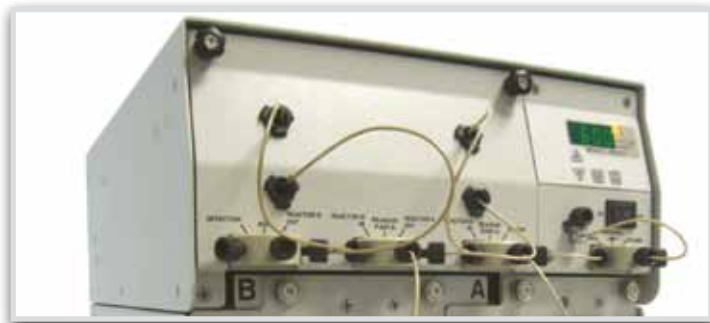
Post-Column Reactor

Pump Specifications

Flow Rates	0.01 - 2.50 mL/min
Pressure	0 – 2,000 psi (138 bar) (upper pressure limited by firmware)
Flow Precision	< 0.5% RSD
Flow Accuracy	± 3% from set point
Materials	All PEEK fluid path, including pump heads
Input	RS-232 Interface for remote control and monitoring
Power	120/230 Vac, 50/60 Hz
Physical	11.8" H x 10.5" W x 17" D (30 x 26.7 x 43.2 cm)
Weight	54 lbs. (14 kg)

Pump Features:

- Automatic piston wash (significantly improves seal life)
- Stepper motor drive, with electronic fast refill via flag and sensor
- Dual check valves (inlet & outlet) – ruby ball, sapphire seat
- Prime-Purge Valve (PEEK)
- Pulse Dampener (PEEK)
- Outlet Filter (0.5 μ glass frit)
- Back Pressure Coil for proper Pulse Dampener operation (approx. 1000 psi @ 1.0 mL/min)
- Pressure Transducer (isolated in Pulse Dampener)
- Interactive front keypad with digital read-out:
 - Flow rate set points
 - Pressure readout
 - Set upper/lower pressure limit



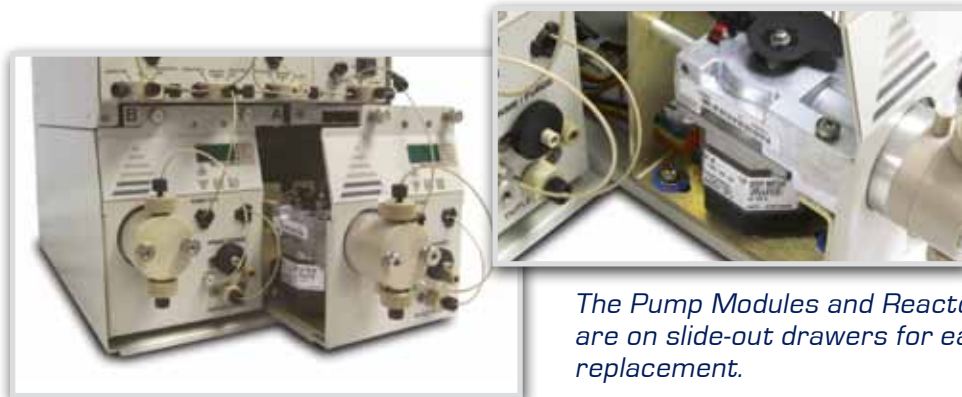
*Modular Design
Reactor Module is Available Separately
[see ordering info.]*

Reactor Specifications

Temp. Operating Range	10° C above ambient to 150° C
Temp. Accuracy	± 2° C over entire range (outlet fluid temperature vs. set point)
Temp. Repeatability	± 1° C
Safety Cutoff Temp.	160° C
Stabilizing Time	60 minutes to 150° C for "Ready" indication
Input	RS-232 Interface for remote control and monitoring

Reactor Features:

- Continuous loop, fully sealed
- Multi-directional path for effective mixing
- Interactive front keypad control with digital display
 - Temperature set point
 - Temperature display (°C or °F)
 - Ready light



*The Pump Modules and Reactor Module
are on slide-out drawers for easy
replacement.*

All Pumps carry a 3-Year Warranty.

PSS1014-RevC-120613

Sensivate

Post-Column Reactor

Ordering Information

To configure the part number for your PCR System:

1. Choose one number from column 1.
 2. Choose one from column 2.
- If second reactor is required, choose number from column 3.

Examples: **PCR1-R015**; **PCR2-R050-R050**



1. Choose System	2. Choose heated reactor volume	3. Choose unheated reactor volume (if required)
PCR System	Reactor Block 1 (heated)	Reactor Block 2 (ambient)
PCR0 - Post Column Reactor Unit	R015 - 0.15 mL Reactor	R015 - 0.15 mL Reactor
PCR1 - Single Reagent Post Column System (1 pump)	R050 - 0.50 mL Reactor	R050 - 0.50 mL Reactor
PCR2 - Dual Reagent Post Column System (2 pumps)	R140 - 1.40 mL Reactor	R140 - 1.40 mL Reactor
To Order a Custom Reactor Size:	RXXX (XXX = Reactor Size in mL)	RXXX (XXX = Reactor Size in mL)

Options

DESCRIPTION	PART No.
SPARGING OPTION ASSEMBLY. INCLUDES 2 MULTI-VALVE BOTTLE CAPS, 1 pressure regulator, mounting hardware, tubing, fittings. Bottles not included.	160808
PRESSURE CONTROL SWITCH	160819

All Pumps carry a 3-Year Warranty.

PSS1014-RevC-120613